

Instruction manual for the accessory DataLOG

EN



CAREFULLY READ THIS MANUAL BEFORE USE THE ACCESSORY DataLOG

INDEX

1. INTRODUCTION	3
2. PREPARATION	3
3. HOW TO USE AND MAINTENANCE	3
3.1. Board connection	3
3.2. Battery CR2032 change and clock synchronization	4
4. DATA DOWNLOAD PROCEDURE	
4.1. Procedure	4
5. DATA UPLOAD ON TCE Cloud	
5.1. Data upload and visualizations	5

1. INTRODUCTION

This manual explains how to install and use the accessory DataLOG.



For a proper use of the accessory, it is advised to carefully read this manual before using the board to guarantee its correct functioning.

2. PREPARATION

Before connecting the board to the PC, follow this procedure:

- Install `net_framework.exe`
- Enter in the "Driver" folder and select the folder based on your operative system

Then execute:

- o `dpinst_amd64.exe` if the operative system of the PC is in 64 bit (most common for last generation PCs)
- o `dpinst_x86.exe` if the operative system of the PC is in 32 bit (most common for old PCs)
- Copy the program `DataLOG_Users_CSV.exe` in the PC
- Reboot the PC
- Connect the DataLOG board to a USB port to allow windows to automatically install the hardware drivers

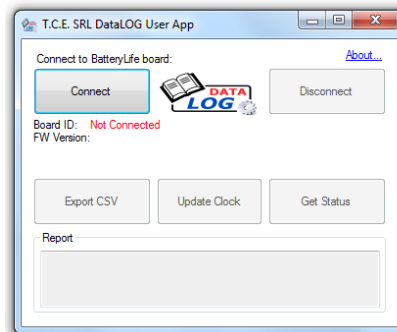
3. HOW TO USE AND MAINTENANCE

3.1. Board connection

After the procedure described in Section 1, the board is now ready to be used.

To use the board, read the following instructions:

- Execute the application DataLOG User APP (`DataLOG_Users_CSV.exe`)



- Connect the DataLOG board to a PC using a USB port and click on the button "CONNECT"

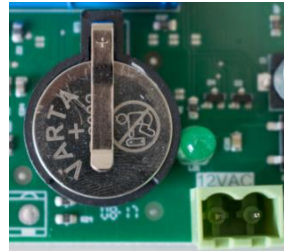


- If the connection was successful, the visualization will be updated with the data related to the connected board (serial code, firmware, time and number of recorded charges)

3.2. Battery CR2032 change and clock synchronization

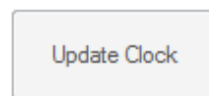
In case the battery found on the printed board of the card is discharged, the program will notify that its replacement is necessary to allow the correct functioning of the board.

Once located the battery, remove the empty old battery and replace it with a similar one with code **CR2032**.



IMPORTANT: THE BATTERY CR2032 CANNOT BE RECHARGED.

Once the battery has been replaced, proceed with the synchronization of the clock by pressing on the button "UPDATE CLOCK"



It is necessary to synchronize the watch in the following cases:

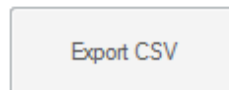
- Upon receive of the charger or of the board (preset time is UTC)
- Periodically or once every two years (recommended)
- Immediately after the replacement of the battery CR2032

4. DATA DOWNLOAD PROCEDURE

4.1. Procedure

To export the recorded dat from the board, follow this procedure:

- Execute the application TCE Group Srl DataLOG User APP (*DataLOG_Users_CSV.exe*)
- Connect the DataLOG board to a PC using a USB port and click on the button "CONNECT"
- Click on the button "EXPORT CSV" then choose the name of the file and its destination folder



- Press the button "DISCONNECT" and it will be possible to phisically remove the USB cable conected to the PC

NOTE: the downloaded file is compatible with Microsoft Excel for a simple visualization of the recorded cycles or can be used directly on our free service **TCE Cloud** available on our website www.tcechargers.com

For this procedure, follow the instructions in Section 5.

5. DATA UPLOAD ON TCE Cloud

5.1. Data upload and visualizations

Once the file has been downloaded from the DataLOG board, is now possible to perform a detailed analysis of the data with the free service TCE Cloud.

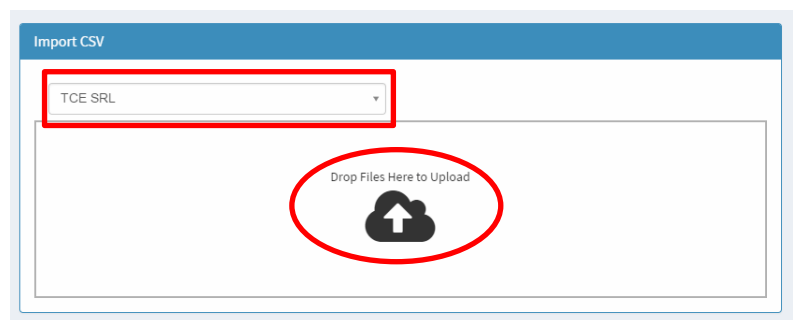
To access to this service is necessary to have a USERNAME and PASSWORD supplied by TCE Group Srl or an authorized dealer.

To begin the analysis, follow this procedure:

- Access to the website www.tcechargers.com/tce_cloud and press on the button “LOGIN” to enter the USERNAME and PASSWORD or on the button “CONTACT” to request new credentials
- Once logged in, select the “IMPORT” menu among the menus on the left or press on the button “IMPORT CSV” found on the main visualization



- In the new visualization, press the central button to load the file obtained from the DataLOG User software or drag and drop the file directly inside the window



Before this procedure, make sure to have selected a customer from the drop down menu found on the top left of the window. In case there are no customers or if it's the first utilization of the TCE Cloud, use the menu “CUSTOMERS>NEW CUSTOMER” to add a new customer.

- Once the upload procedure is complete, it will be possible to analyze the DataLOG data related to the charger connected to it from the “VIEW CHARGERS” menu.

The data is shown in a tabular format and by clicking on a specific charger it will be possible to visualize all the charges related to that given charger

Chargers Regolatore

All Customer' Chargers

Show 10 entries

Customer	Chargers S.N.	Batteries S.N.	Date	Duration	Last Vmax	Last Amax	Last Alifcal	Last Tmax	Last Ah
TCE SRL	1001A0081GMSA61080	1001A0081GMSA61080	14/05/2017	02:30:00	50.0	125.0	106.0	33	289.0
TCE SRL	0G00K0081GMSA61080	0G00K0081GMSA61080	12/05/2017	05:59:00	92.0	111.0	75.0	52	594.0
TCE SRL	050020081GMSA61080	050020081GMSA61080	12/05/2017	02:48:00	101.0	79.0	43.0	45	157.0
TCE SRL	0100C0081GMSA61080	0100C0081GMSA61080	12/05/2017	08:58:00	104.0	117.0	30.0	48	703.0
TCE SRL	0M00S0081GMSA61080	0M00S0081GMSA61080	11/05/2017	07:25:00	100.0	111.0	46.0	45	581.0
TCE SRL	0500S0081GMSA61080	0500S0081GMSA61080	11/05/2017	06:47:00	99.0	117.0	50.0	49	563.0
TCE SRL	0800A0081GMSA61080	0800A0081GMSA61080	11/05/2017	02:06:00	103.0	66.0	34.0	37	79.0
TCE SRL	284100006187001C0034801328074E45	DCD1000086F200390012900932304E45	23/12/2016	00:00:00	0.0	0.0	0.0	0	0.0
TCE SRL	284100006187001C0021801328074E45	3441000048F00010000800090874E45	23/12/2016	05:40:00	56.5	40.5	27.4	53	156.0
TCE SRL	284100006187000E00C001028074E45	DCD1000086F200140010000832304E45	27/01/2016	03:30:00	51.6	84.4	60.0	39	170.0

Showing 1 to 10 of 12 entries

Previous 1 2 Next

For further information regarding the free service TCE Cloud, visit the website www.tcechargers.com/TCE_Cloud, contact TCE SRL or an authorized dealer.